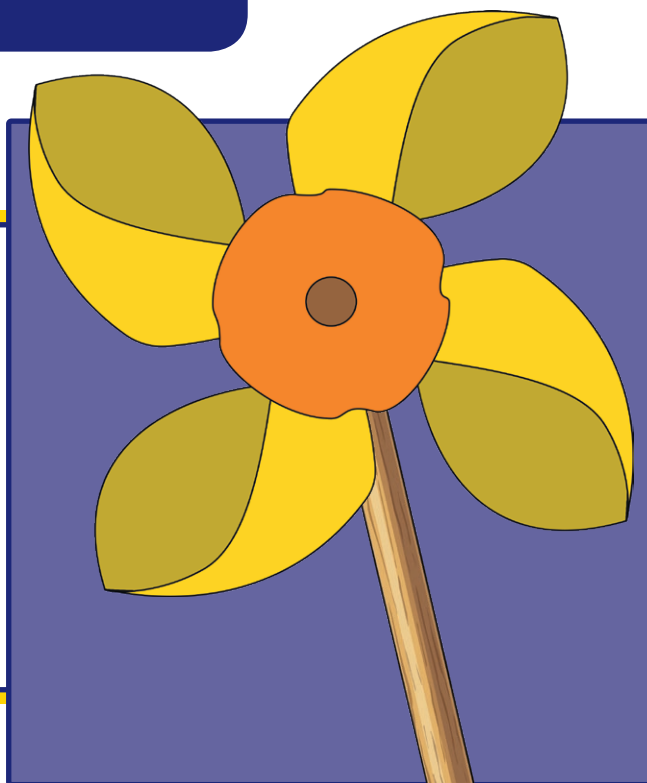


# Daffodil Day Pinwheel

## You Will Need:

- wooden dowel (approximately 30cm long)
- green paint (optional)
- pinwheel templates
- scissors
- drawing pin
- sticky tack

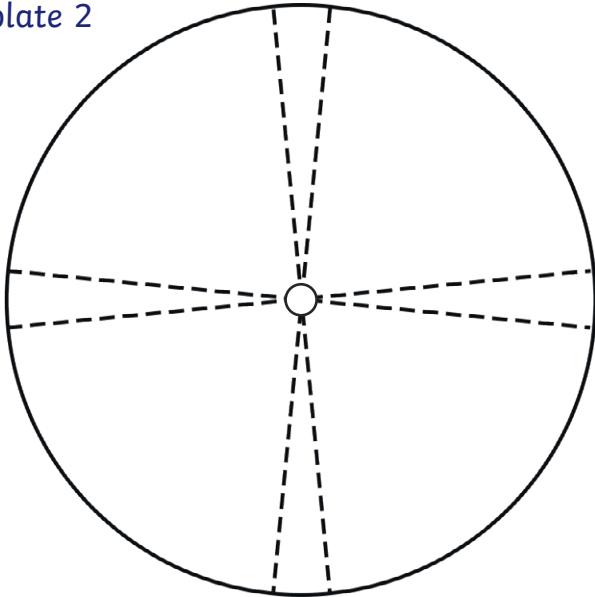


## Instructions:

1. Paint wooden dowel green (optional) and allow to dry.
2. Print template 1 (petals) on yellow paper or light card.
3. Print template 2 (trumpet) on orange paper or on white paper and colour in orange.
4. Cut out the pinwheel templates along the dotted lines.
5. Fold the small circles at the ends of the sails in to meet the small circle in the centre of the pinwheel.
6. Cut out trumpet circle and fold inwards along the dotted lines. Glue the trumpet into the centre of the petals.
7. Carefully push the drawing pin through the small circle in the middle of the trumpet and petals.
8. Place the dowel behind the pinwheel and push the drawing pin into the dowel to secure the pinwheel to its handle. Don't push the drawing pin in too tightly or the pinwheel won't spin.
9. Check the back of the dowel to ensure the sharp end of the drawing pin is not sticking out. If it is, place some sticky tack over it.



template 2



template 1

