

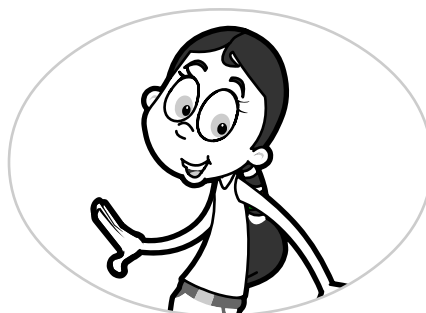


Name: _____ Class: _____

List three pairs of factors for the numbers below.
One has been done for you.

90

- 30 and 3
- 15 and 6
- 10 and 9



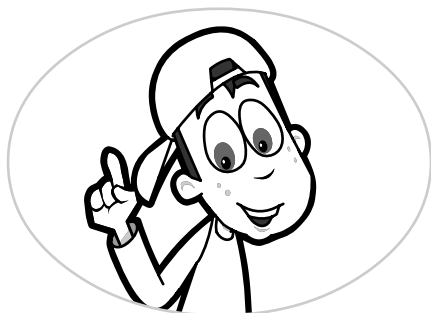
120

- 12 and 10
- 60 and 2
- 30 and 4

60

- 30 and 2
- 15 and 4
- 5 and 12

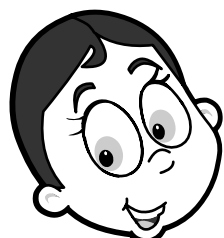
Suggested answers



100

- 25 and 4
- 20 and 5
- 50 and 2

Klara has found a number between 1 and 100 that has 12 factors!
Klara has given you a clue. What is the number?



The answer is between 50 and 70!

Answer: 60
Factors: 1, 2, 3, 4, 5, 6, 10, 12,
15, 20, 30, 60