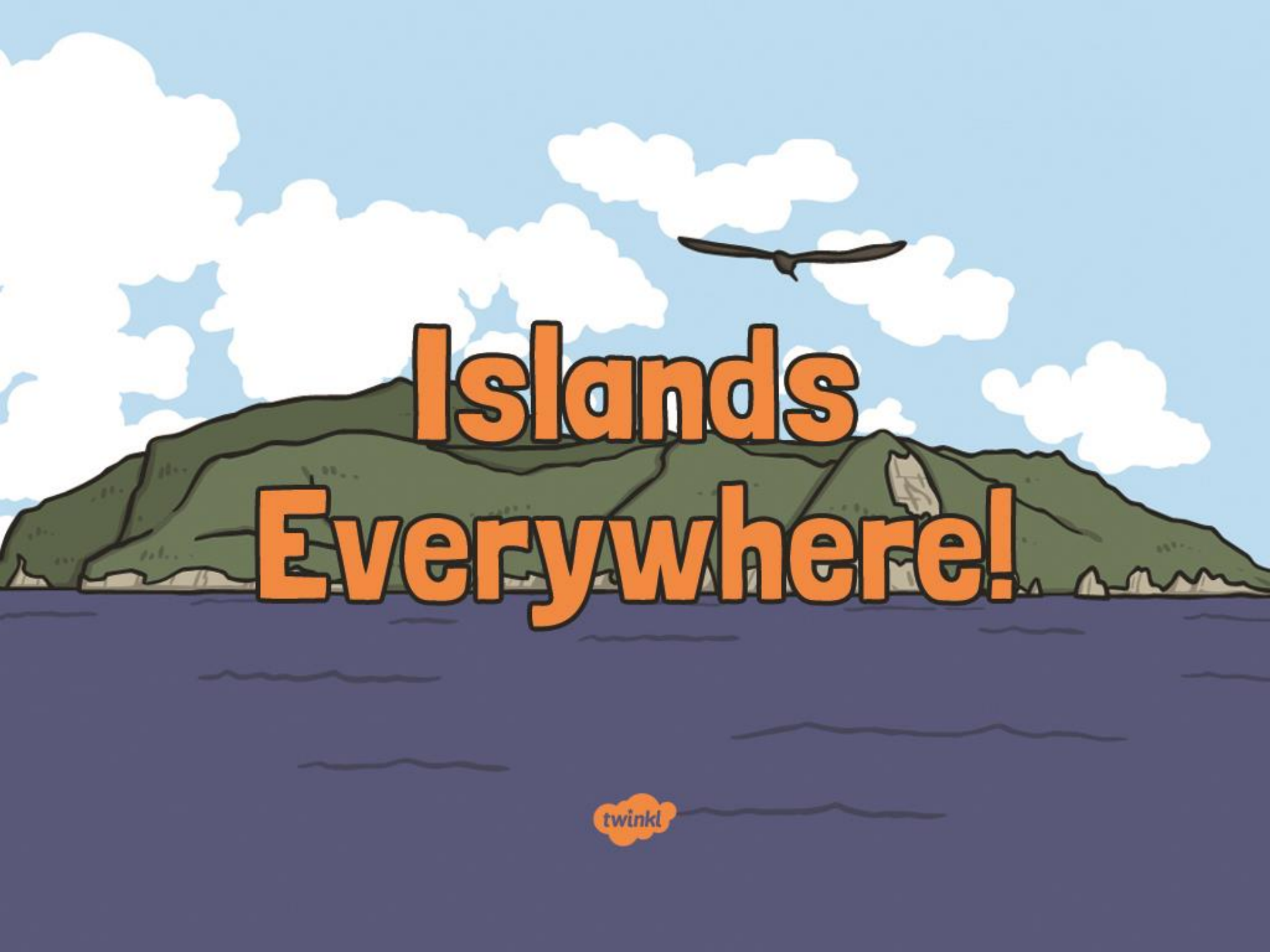




Geography

Beside the Seaside



Islands Everywhere!

Aim

- I can use a map to identify the main British islands.
- I can understand the location of hot and cold islands in the world.

Success Criteria

- I can explain how an island is different from the mainland.
- I can use an atlas to name and locate some of the main British islands.
- I can name some 'hot' islands of the world.
- I can name some 'cold' islands of the world.
- I can begin to explain why some islands may be 'hot' and some 'cold'.

What is an Island?



An island is an area of land surrounded completely by water. It may be in a river, a lake or the sea. Islands can be different shapes and sizes. Some islands are large, like Britain, others are small and you could easily walk around them.

What is an Island?



The United Kingdom of Great Britain and Northern Ireland includes the island of Great Britain and the north eastern part of the island of Ireland (Northern Ireland) and many smaller islands.



What is an Island?

Whole Class

Some islands, like the British Isles, were once joined with other areas of land called continents. When the sea level rose, they became cut off and islands formed.

What is an Island?



The British Isles



What is an Island?



How could we describe islands?

How is an island different from the mainland?

How do people get to an island?

What types of transport would be used to get to the island?

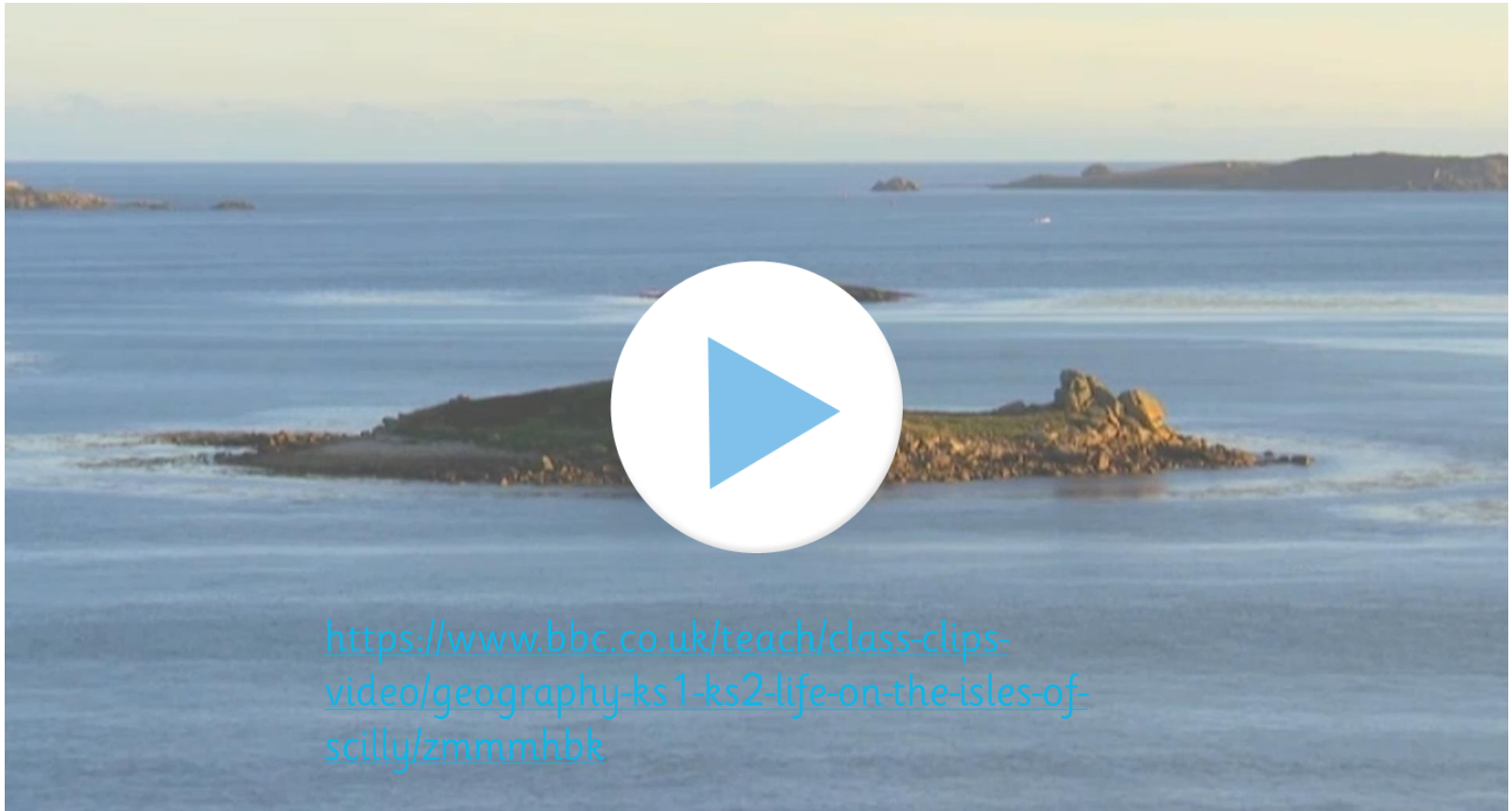
What transport would be used on the island itself?



Out in the Orkneys



Can you write or draw three (or more) facts about the Orkney Islands?



<https://www.bbc.co.uk/teach/class-clips-video/geography-ks1-ks2-life-on-the-isles-of-scilly/zmmmhbk>

Same or Different



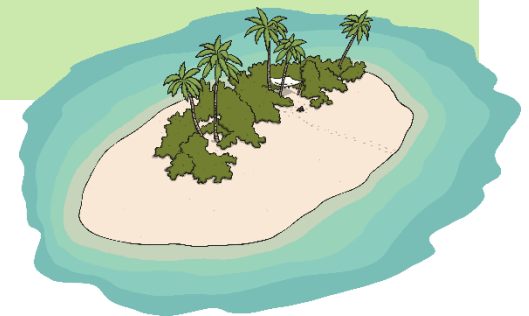
What is the same about living in your locality and living on an island?

What is different about living in your locality and living on an island?

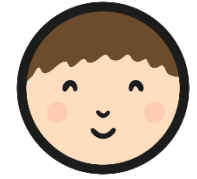
Same

Different

What would you like about living on an island?
What would you dislike?



Where Are Our Islands?



Using an atlas, you are going to find the main British islands and record their location on a map.

★ Locating Islands

Use an atlas to name all the islands numbered on the map.

1. I _____
2. I _____
3. S _____
4. O _____
5. A _____
6. S _____
7. J _____

twinkl planit
Geography | Year 2 | (Beside The Seaside) (Class Overview) | Lesson 2

★★ Locating Islands

Use an atlas to name all the islands on the map.

1. _____
2. _____
3. _____
4. _____
5. _____
6. _____
7. _____

twinkl planit
Geography | Year 2 | (Beside The Seaside) (Class Overview) | Lesson 2

★★★ Locating Islands

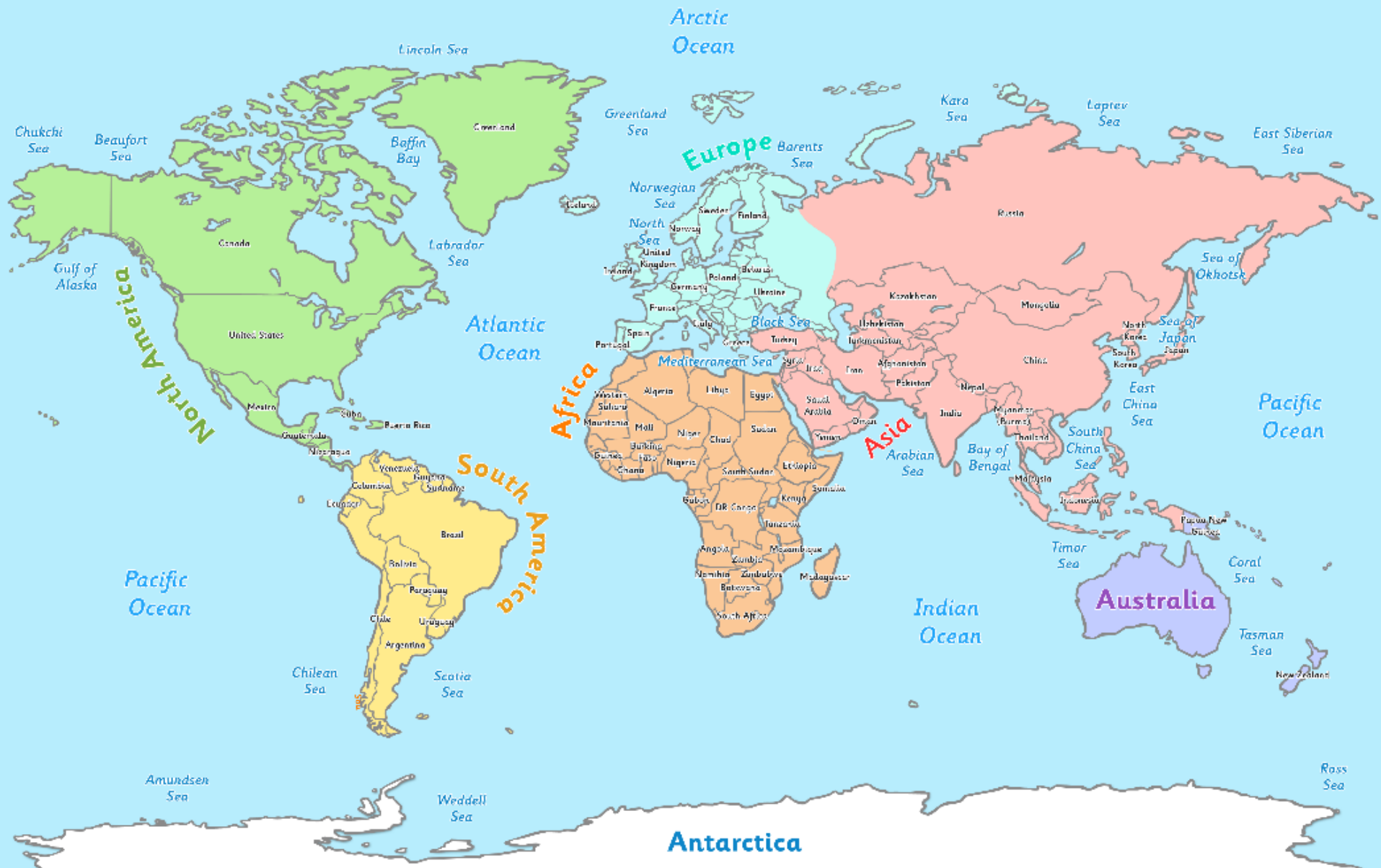
Use an atlas to name all the islands on the map.

1. _____
2. _____
3. _____
4. _____
5. _____
6. _____
7. _____
8. _____
9. _____
10. _____

twinkl planit
Geography | Year 2 | (Beside The Seaside) (Class Overview) | Lesson 2

Challenge: Can you find any other islands in the UK? What about islands across the world?

Map of the World



[Click anywhere to go back](#)

Aim



- I can use a map to identify the main British islands.
- I can understand the location of hot and cold islands in the world.

Success Criteria

- I can explain how an island is different from the mainland.
- I can use an atlas to name and locate some of the main British islands.
- I can name some 'hot' islands of the world.
- I can name some 'cold' islands of the world.
- I can begin to explain why some islands may be 'hot' and some 'cold'.

